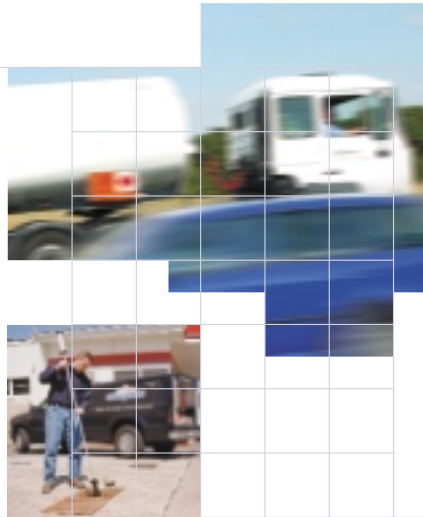


Tank Gauging Solutions

Changing the way you manage your fuel



Changing the way you manage your fuel

Manual tank dipping is still the most common method used today to obtain fuel levels for inventory management purposes. At first glance this may seem perfectly adequate, so why change to gauges?



Tank gauging is much more than just automated inventory management, it's about having more control over your fuelling operation, collecting accurate information from your sites with less effort and allowing you to make better decisions about your assets.

How much time and effort is spent in your organisation chasing inventory and delivery information? With high staff turnover at your sites, how much can you rely on them to provide you with accurate information to plan your fleet or optimise your inventory?

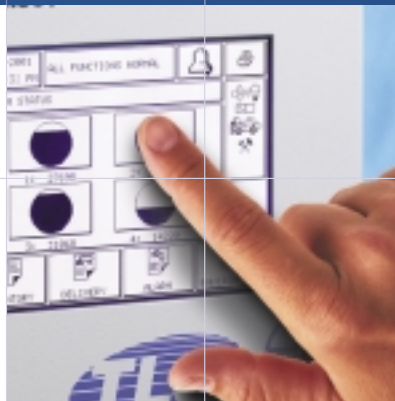
How well does your fuel reconciliation stack up? Would you accept a level of uncertainty when dealing with your in-store goods? Are any of your tanks and lines leaking?

In this increasingly competitive age, it is becoming incrementally more important to do more with less resources. This means less inventory on site, better tanker fleet utilisation, less people on site, more throughput per site and less people in the office doing more work.

Tank gauge automation is instrumental in meeting these challenges. Accurate information at your disposal will allow you to plan more effectively and with less effort to gain better results.

Damaging leaks and losses

Environmental sensitivity is a growing trend globally, increasing the awareness of both the public and regulators about the potential dangers of inadequate fuel management.



Under ever tighter regulations, better controls need to be implemented to guard against leaks, spills and overfill situations. Our tank gauges have all been independently tested and certified to exceed the rigorous US EPA leak detection standards.

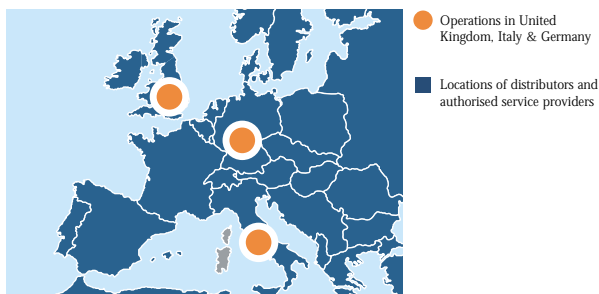
Tighter requirements require better controls and tank gauges will provide that control. Our most advanced systems can automatically reconcile your fuel and identify areas where you may be suffering losses through delivery or temperature variances, revealing what the actual on-site loss really is.

Data collected by the US government suggests that 1 in 5 fuelling stations has a leak. What are the chances within your operation? Is it worth the risk not to make the investment? Clean up costs and fines can weigh heavily on your operations' profitability.

Trust the world leader

Veeder-Root is the world's largest manufacturer of automatic tank gauges. Today there are approximately 550,000 tanks around the world being monitored using our technology.

We have regional offices in many European countries and an extensive network of authorised distributors and installers throughout the world.

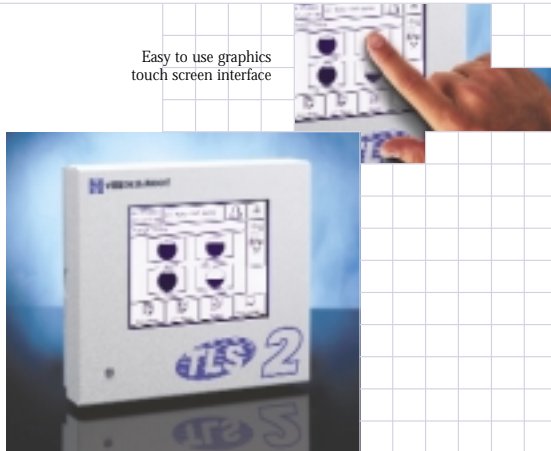


The TLS product family

The TLS product family encompasses a full range of hardware solutions for fuel monitoring at retail, commercial and industrial fuelling facilities.

The TLS line ranges from simple, tank inventory display units to state-of-the-art modular systems, which automatically determine tank and line tightness and can also be linked to a host of other environmental sensors, external alarms and provide automatic dispenser shutdown.

Easy to use graphics
touch screen interface



Connects up to
8 additional
forecourt sensors



- **TLS 2**

Low cost, user friendly inventory and delivery management system. Easy to use and operate via a touch screen display. The user menu is icon driven, with multiple language choices available. Various connectivity options include wireless GSM modem. TLS 2 monitors up to six tanks and can also perform certified tank leak detection. Perfect if you want a simple to use system to automate your fuel scheduling.

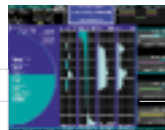
- **TLS-300**

Lower mid-range product which monitors up to 8 tanks, but can also monitor up to 8 sensors. Can perform static and continuous tank leak detection, with no tank shutdown required. Ideal for sites with a higher risk profile.

Integrated precision
line leak detection



Patented automatic
tank recalibration and
inventory reconciliation



- **TLS-350 PLUS**

Fully modular site monitoring system that will expand with site or customer needs. Can monitor up to 16 tanks and up to 64 sensors. The TLS-350 platform also provides enhanced risk management through precision line leak detection for submersible pumps on up to 6 lines, plus static and continuous tank leak detection, with no tank shutdown required.

Communication and interface options are also further enhanced. The TLS-350 platform can provide for up to 5 communication devices and will allow for 16 external inputs, or 32 output relays to control dispensers or other external devices such as lighting and alarms.

- **TLS-350R**

The state-of-the-art business management tool for petroleum retailers. In addition to the TLS-350 Plus capabilities, the TLS-350R also automatically reconciles sales against deliveries and inventory. It automatically re-calibrates tank charts resulting in highly accurate reconciliation which allows it to highlight potential fuel loss problems.

Sensors and peripherals

From L-R: discriminating dispenser pan sensor, sump sensor, twin wall piping sensor and interstitial sensor for fibreglass tanks



Sensors

Veeder-Root offer a great variety of sensors to monitor all the different environmentally sensitive areas on the forecourt for leaks. Our range includes discriminating and liquid sump sensors, interstitial sensors for double wall tanks and lines, and monitoring well sensors.

Probes

Veeder-Root offer different probes for different applications, from inventory only to precision leak detection, for forecourt fuels as well as alternative fluids. Our probes will fit in tank openings as small as 1 inch (2.5 cm). We can provide special probe installation kits for use with LPG and extremely abrasive chemicals.

Line Leak detection

Our TLS-350 platform of tank gauges integrate seamlessly with our Red Jacket submersible pumps. Each time a dispense cycle ends, the lines are automatically tested for leaks.

The lines can be precision tested to US EPA standards of 0.38 or 0.76 litres per hour at user defined intervals for increased peace of mind, with programmable automatic shutdown.

DIS-50/100/T

The DIS product family are designed to help control and manage fuel deliveries at petrol filling stations. The product family ranges from the simple external display DIS-50 to the truck mounted DIS-T, which automatically captures key tank data from the TLS and displays it on-screen and via a thermal printout.



Communication is key

Communication options

Veeder-Root is about changing the way you manage your fuel. We realise that the data generated by our systems is only of value if it is used to manage the business.

That is why we at Veeder-Root have spent a lot of time developing multiple communication options for our gauges, allowing you to either connect directly with the gauge or interface the TLS to your local operating network or wider area network of stations.

Important to us is that you utilise the gauge to its maximum potential by using the data it generates to improve the way you manage your fuel.



TCP/IP Module

Analogue modem



GSM internal modem

GSM external modem



Our Inform™ remote communication software allows modem and TCP/IP connection with our gauges in case no WAN exists with your sites. Inform is very user friendly, and easy to set-up and use.

Tank
Gauging
Solutions

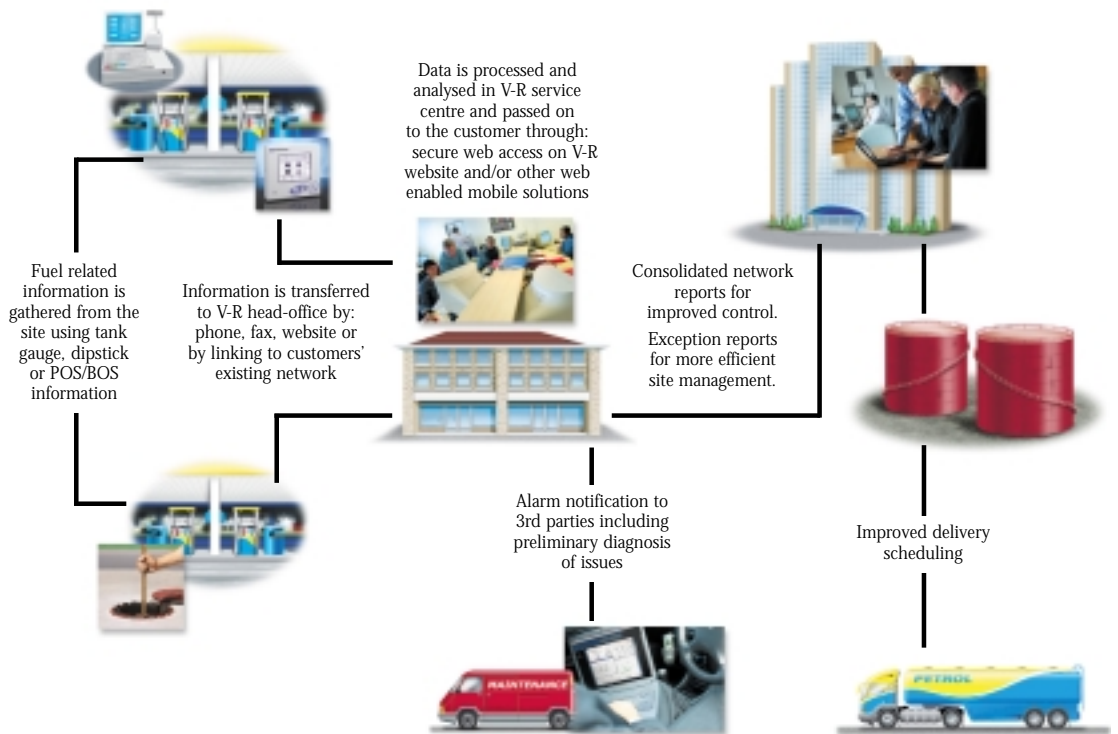
Veeder-Root Fuel Management Services

If you are unsure how to improve your current fuel management practices then give us a call. We have developed a full range of fuel management services aimed at improving the control of your fuel storage and supply network. Be it risk management, loss control or dispatch support, our services can help you improve your business by providing more control with less effort to make better decisions.

From the sites subscribed to the service, we collect the relevant fuel information and present the processed data back to you in consolidated reports through our secure website. The best part is, no tank gauge is required for the basic services. So no up-front hardware investment is necessary to start improving your business today.

There are risk management, loss control and logistics support service modules to choose from.

How it works



Veeder-Root - Brief History

1898

Veeder Cyclometer - the standard in the cycling industry

1928

Veeder manufacturing & Root Co. merge to form the largest manufacturer of counting & computing devices

1930

Veeder-Root counters incorporated into fuel dispensers

1940's, 50's & 60's

Veeder-Root counters incorporated into fuel dispensers

1981

Veeder-Root TLS-100

1990

Veeder-Root PLLD. Over 27,000 lines working in the field

1994

Veeder-Root TLS-350R

1996

Veeder-Root TLS-PC

1997

Simplicity Petroleum Data Services

1998

Fuel Logistics Services, from Simplicity

1999

Inform & TLS-PC-32

2000

TLS-NT
USTMAN acquisition

2001

Red Jacket acquisition

2002

Gilbarco merger



For more information on
Tank Gauging Solutions contact us at:

+44 (0)208 392 1355

email: sales@veeder.co.uk

or visit:

www.veeder.com



Tank
Gauging
Solutions



Hydrex House, Garden Road, Richmond, Surrey, TW9 4NR, UK
Telephone: +44 (0)20 8392 1355 Fax: +44 (0)20 8878 6642